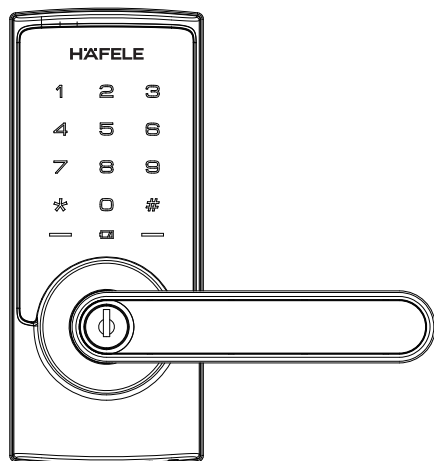




HÄFELE

Digital door lock
Model DL6500



DL6500

User manual

Read before using



Product features



Three way solution

Three electronic locking modes: PIN code, APP and emergency key.



Master PIN code/ User PIN code identification

1 master PIN code, up to 20 user PIN codes.



Random security coding function

A random number can be added before or after the real user PIN code but the maximum length is 20 digits. This feature will prevent the real user PIN code from being exposed.



Prevent mischief and hacking

When entering 10 times a wrong user PIN code, the lock is suspended for 3 mins. After that, the lock will activate again. While the lock is suspended, the screen will flash when you are trying to use the keypad.



Alarm for battery replacement time

When the power of the battery is too low a warning signal will appear on the screen. Please replace all batteries immediately.



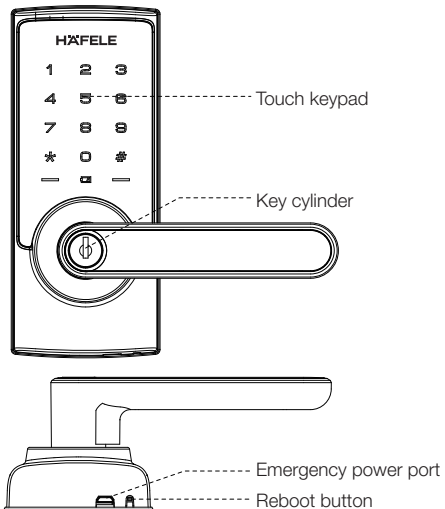
Warnings

- * Read and understand all instructions before use.
- * If damage is caused by failure to follow this instructions, the warranty does not apply.
- * Only use alkaline batteries.
- * Do not expose the product and accessories to rain or water.
- * Do not expose the product to corrosive substances to avoid damage to the protective cover.
- * When cleaning the product, please wipe it with a soft cloth.
- * If there is a low battery alert, please replace all the batteries in time and make sure they are properly installed.

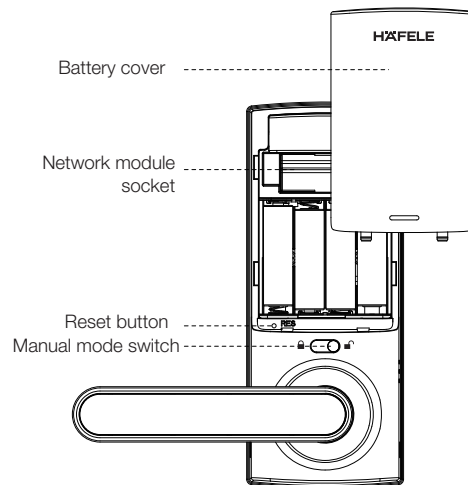
Read before using

✓ Product specifications

Outside panel



Inside panel



⚠ CAUTION

1. You can follow the voice guide by multi-language (English/Spanish/Portuguese/French/Chinese).
2. Master PIN code(4~10 digits): Default master PIN code is "12345678", please modify it after installation.
3. User PIN code(4~10 digits): Maximum capacity is 20 .

Read before using

✓ Factory default settings

Settings	Factory defaults
Master PIN code*	12345678
Speaker	Enabled
Wrong code entry limit	10 times
Shutdown time	3 minutes
Voice guide language	English

*Important: First step is to set your own master PIN code.

✓ Quick setup guide



Master PIN code



User PIN code



Star key, return to previous menu

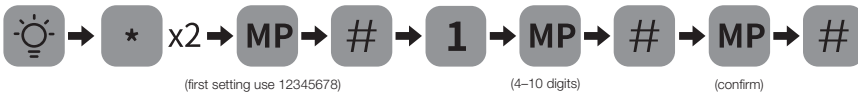


Touch the screen to activate lock

Lock operation

✓ Add/Change access data

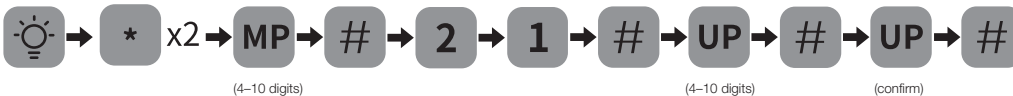
How to change master PIN code



⚠ CAUTION

Before changing default master PIN code, all other setting menu will be disabled. You have to change master PIN code first, then do other lock settings.

How to add user PIN codes



⚠ CAUTION

1. When registering user PIN codes, the code must be entered within 10 seconds.
2. At any time you can return to the previous menu by pressing the "*" key.

Lock operation

✓ Delete access data

How to delete user PIN code

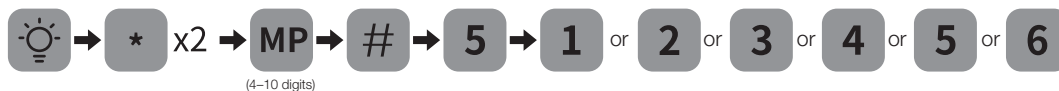


⚠ CAUTION

1. When deleting user PIN codes, the user number must be entered within 10 seconds.
2. At any time you can return to the previous menu by pressing the “*” key.
3. Deleting all user PIN codes can only be done by resetting the lock to factory default settings.

✓ Additional lock features

Language & Silent mode settings



1 English

2 Spanish

3 Portuguese

4 French

5 Chinese

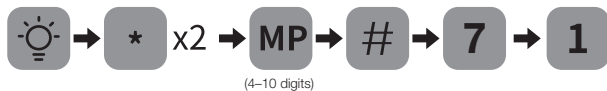
6 Silent Mode

Lock operation

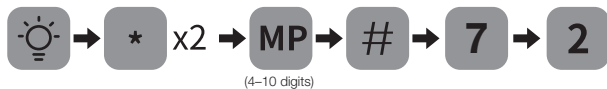
✓ Additional lock features

Bluetooth settings

Enable Bluetooth



Disable Bluetooth



⚠ CAUTION

1. The default setting for Bluetooth is disabled.
2. Bluetooth will shut down in 2 mins after touch keypad lights off for energy saving, it will back to work when touch keypad wakes up.

Network module (Optionally available)

Join network



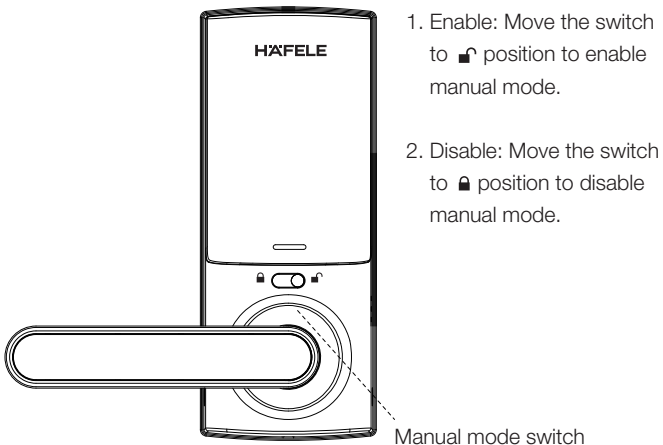
Log off network



Lock operation

Additional lock features

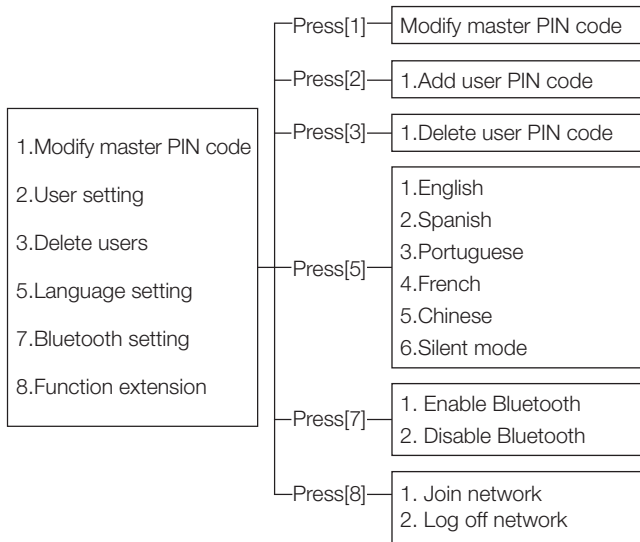
Manual mode



⚠ CAUTION

Manual mode is designed for high traffic doors, when Manual mode is enabled, the door will be openable without PIN code or key, Manual mode could be disabled temporary by press and hold any key on keypad for 2 seconds from outside.

Menu table

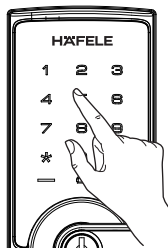


How to use

✓ Open & Lock the door

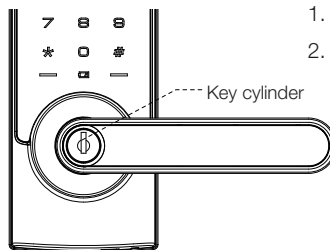
How to open the door from outside

PIN code



1. Touch keypad by palm to lighten keypad.
2. Enter the enrolled PIN code with end of [#]. Voice prompt "Verification Succeeded".
3. Press down handle to open the door.

Mechanical key

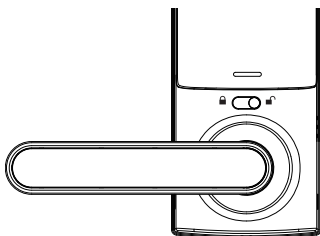


1. Insert the key into key hole and rotate it with proper angles.
2. Press down handle to open the door.

Random security coding function

The random number can be added before or after the real user PIN code but the maximum length is 20 digits. This feature will prevent the real user PIN code from being exposed.

How to open the door from inside



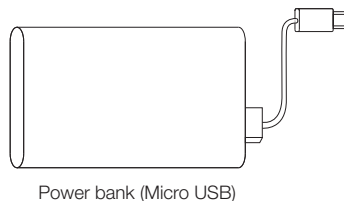
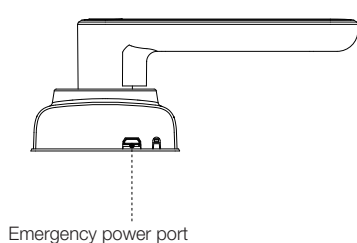
Door handle

Press down handle to open the door.

How to use

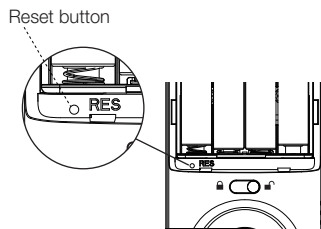
✓ Service features

Micro USB emergency power supply



When the battery voltage is too low and cannot be opened from outside, connect a 5V power supply via Micro USB port at the front. Then unlock the door and replace all batteries immediately.

Reset to factory default settings



Operation instructions:

1. Keep the lock in “unlock” status.
2. Open battery cover and find the reset button.
3. Use a paper clip to press and hold the reset button.
4. Remove at least 1 pcs battery from battery box, then reinstall all batteries again.
5. Keep holding the reset button until hearing voice guide “Restoring wait a moment”.

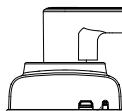
⚠ CAUTION

All user data will be deleted!

How to use

✓ Service features

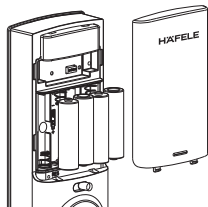
Reboot button



Reboot
button

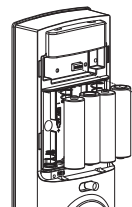
Press the reboot button to restart the lock,
when the system is unresponsive.
No user data is deleted.

Replace batteries

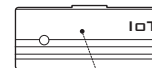


1.5V AA Alkaline Battery is required.
Total is 4 pcs, Do not mix old and
new batteries together in replacement

Network module



Network
module
interface



Network module
(optionally available)

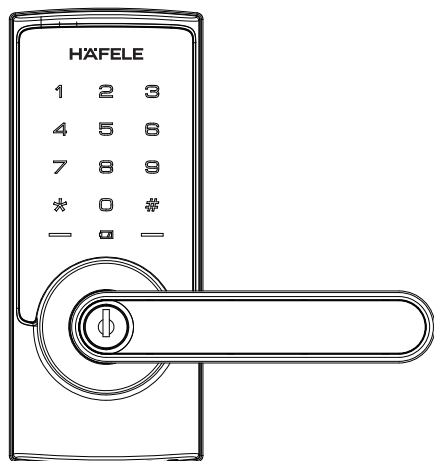
Access master mode and press [8] for function extension,
which is reserved for wireless communication and other
smart home interfaces.

Please contact Hafele customer service center for more details.



HÄFELE

Digital door lock
Model DL6500

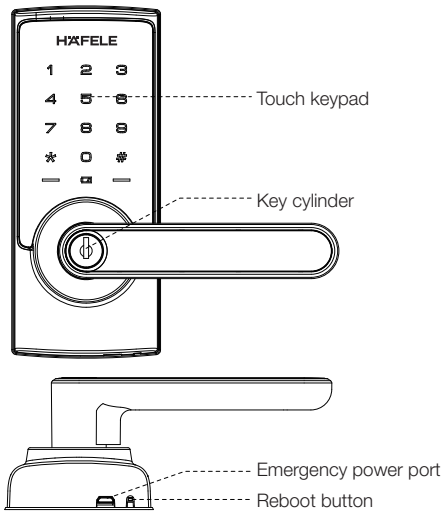


DL6500

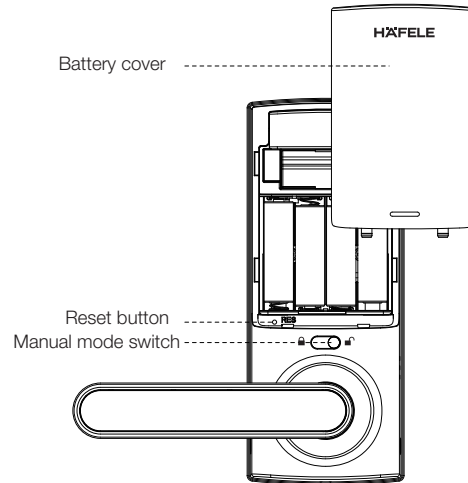
Installation guide

✓ Product specifications

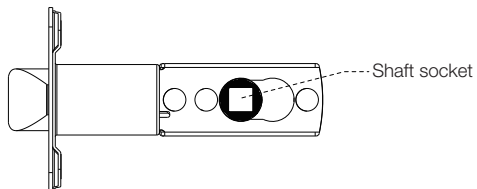
Outside panel



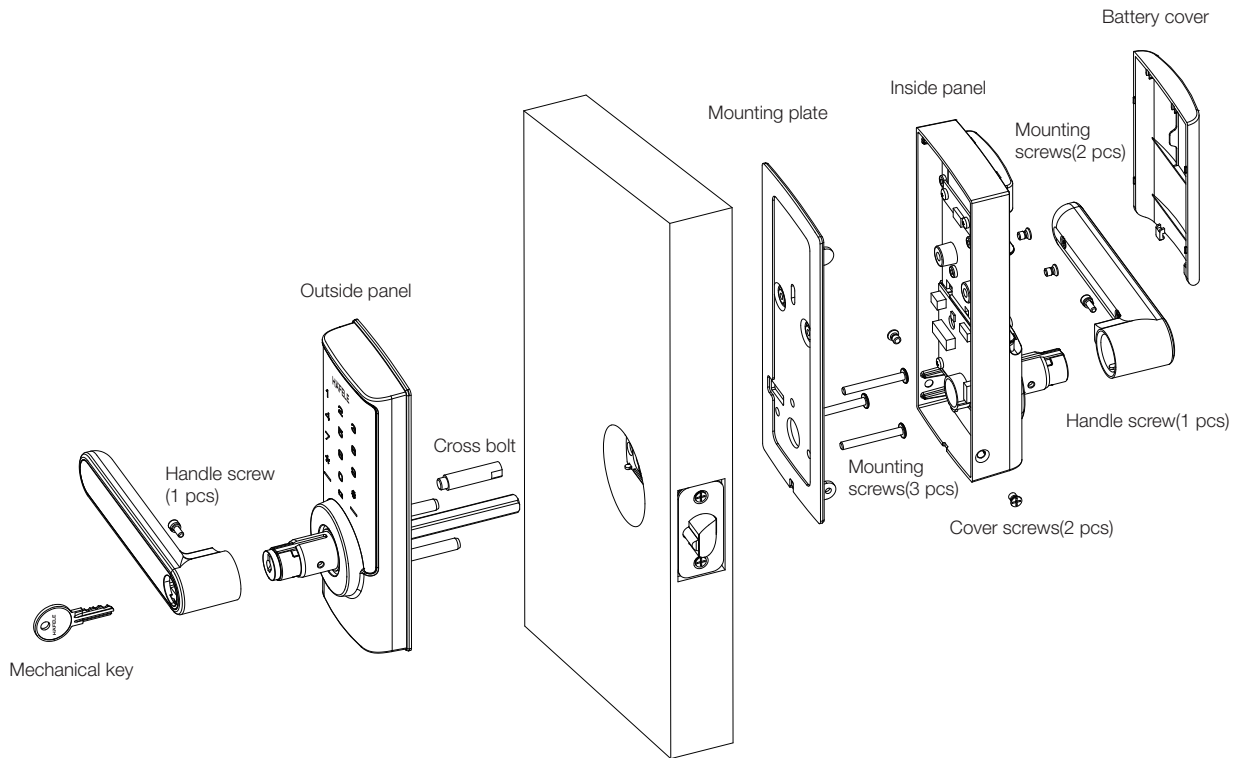
Inside panel



Latch lock



✓ Product specifications

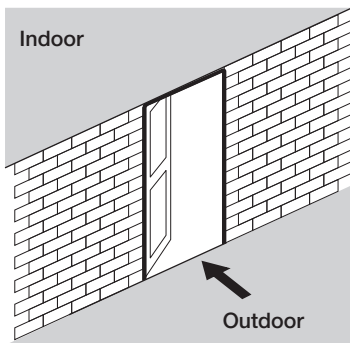




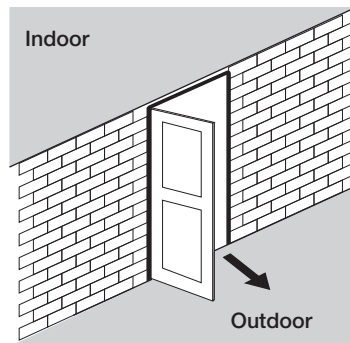
Preparing for installation

Check door open direction

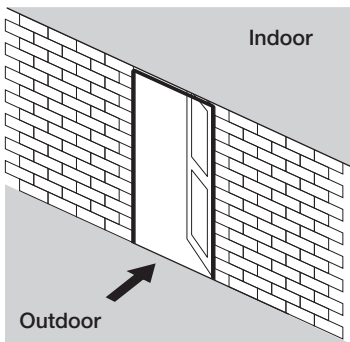
This product fits for all door open directions Left-in / Left-out / Right-in / Right-out.



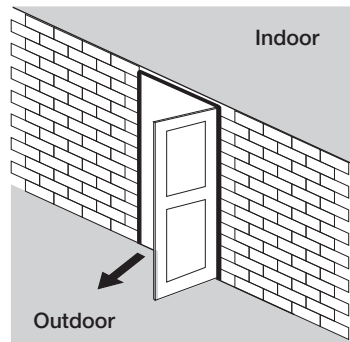
Left-in



Left-out



Right-in

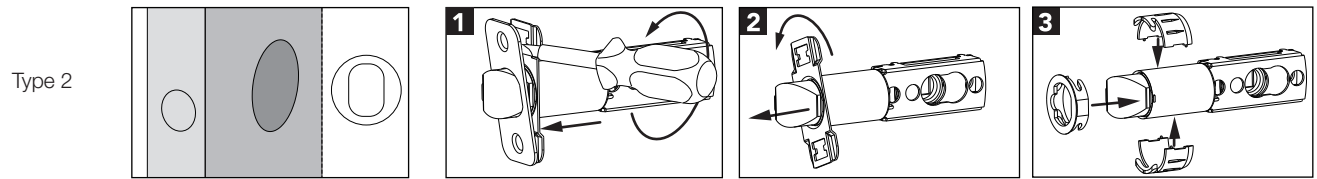
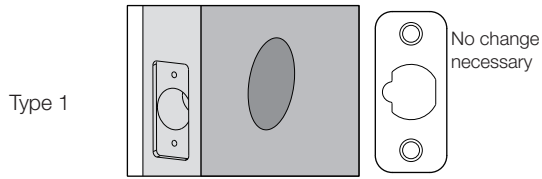


Right-out

✓ Preparing for installation

Change the faceplate (If necessary)

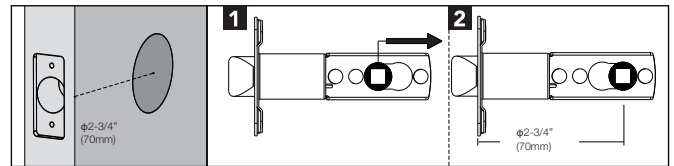
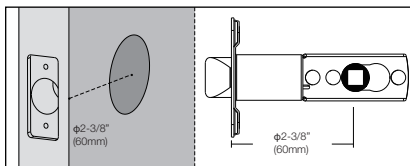
Check the type of door frame sockets to be installed.



Follow the 3 steps to complete the faceplate replacement.

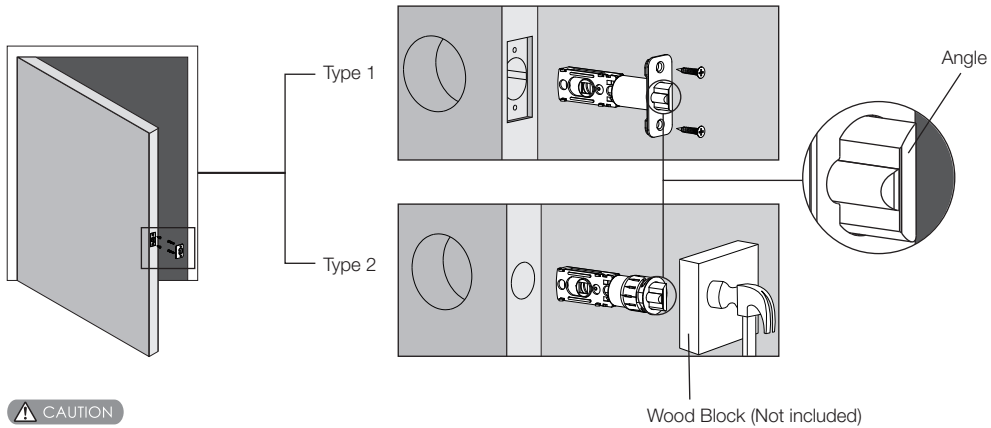
Adjust the backset

This latch lock can be adjust the backset from 60 mm to 70 mm by following the below picture.



✓ Installation

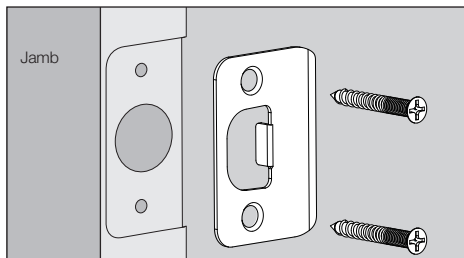
1. Mark and drill bores by using the installation template first, then fix the latch lock into the door frame.



⚠ CAUTION

Make sure latch angle face door jamb.

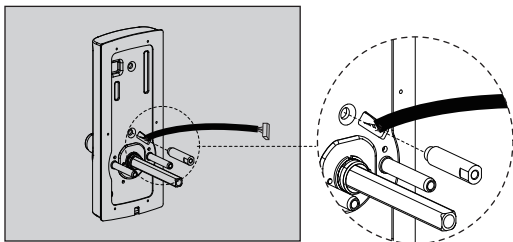
2. Install strike plate onto door jamb.



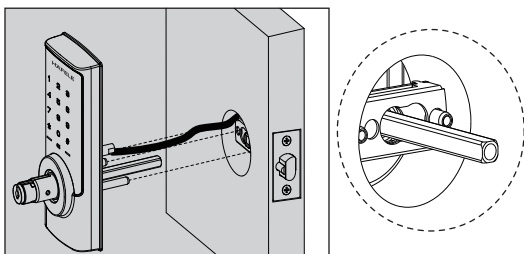


Installation

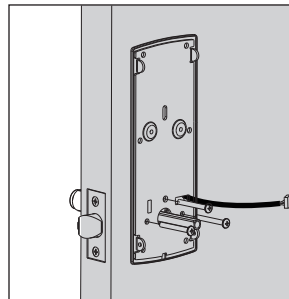
3. Fix cross bolt on the front panel.



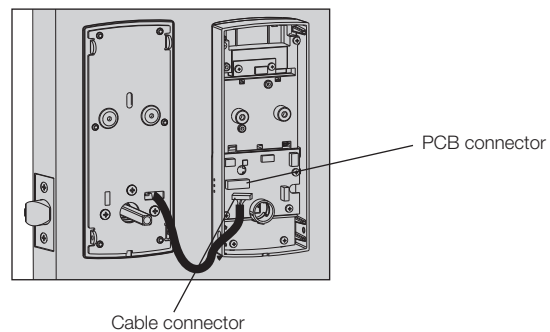
4. Pass the connection wire through the top bore. Then align and insert square shaft into shaft socket to make the front panel fit against the door closely.



5. Pass the connection wire through the mounting plate and install the mounting plate with fixing screws tightly against the door surface.

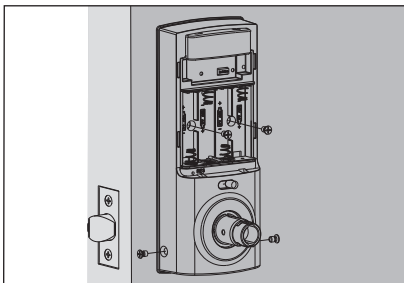


6. Insert the connecting wires of front panel into the related sockets of the back panel.

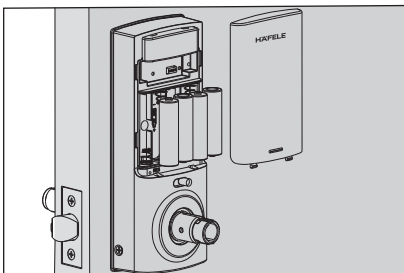


✓ Installation

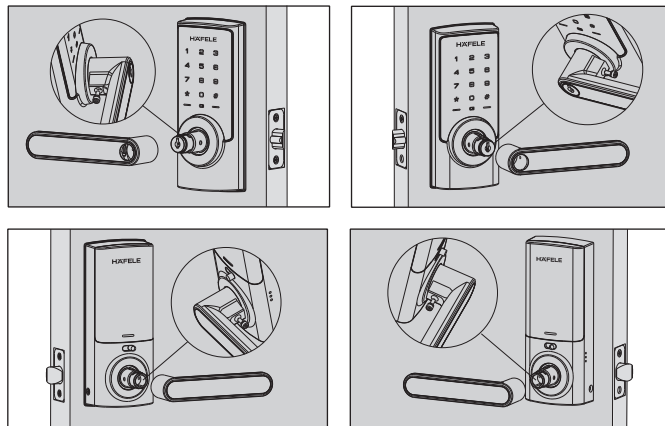
7. Make the back panel fit against the door closely.
Then tighten fixing screws.



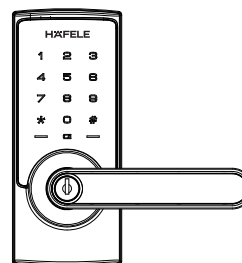
8. Install the batteries and the battery cover.



9. Install the exterior and interior handle, then tighten the fixing screw.



10. Please check handle and mechanical key for proper operation.



⚠ CAUTION

Test if mechanical key works smoothly after installation.